



Sarsfield Court Retail/Residential Development, Limerick

PROJECT TEAM

ARCHITECTS

Newenham Mulligan & Associates
Project/Design Architect: Tom Mulligan
and Alison O'Donoghue
Technicians: Niall McPartlin/Philip Fox
Interior Architect: Nigel Wynne

STRUCTURAL ENGINEERS

Gibson O'Connor

M & E CONSULTANTS:

J V Tierney & Company

QUANTITY SURVEYORS:

Bruce Shaw O'Sullivan

CONTRACTOR:

PJ Hegarty & Sons

Architects' Account

The client's brief was to design an urban retail/residential infill scheme in the prominent location of Sarsfield Street, Limerick City, comprising the following requirements:

1. 3 no. double height mezzanine shop units with internal flexibility for the end-user.
2. 12 no. 2 bedroom apartments over 3 levels with the central open courtyard – communal spaces.

The project involves the demolition of a poor 1950s building and

other existing structures in a bad state of repair and construction of a 4/5 storey building to create urban renewal on this important streetscape.

The external finishes comprise natural stone, plaster and zinc roof together with glass balustrades, steel bridges and walkways.

All apartments are entered from the street via an open courtyard.

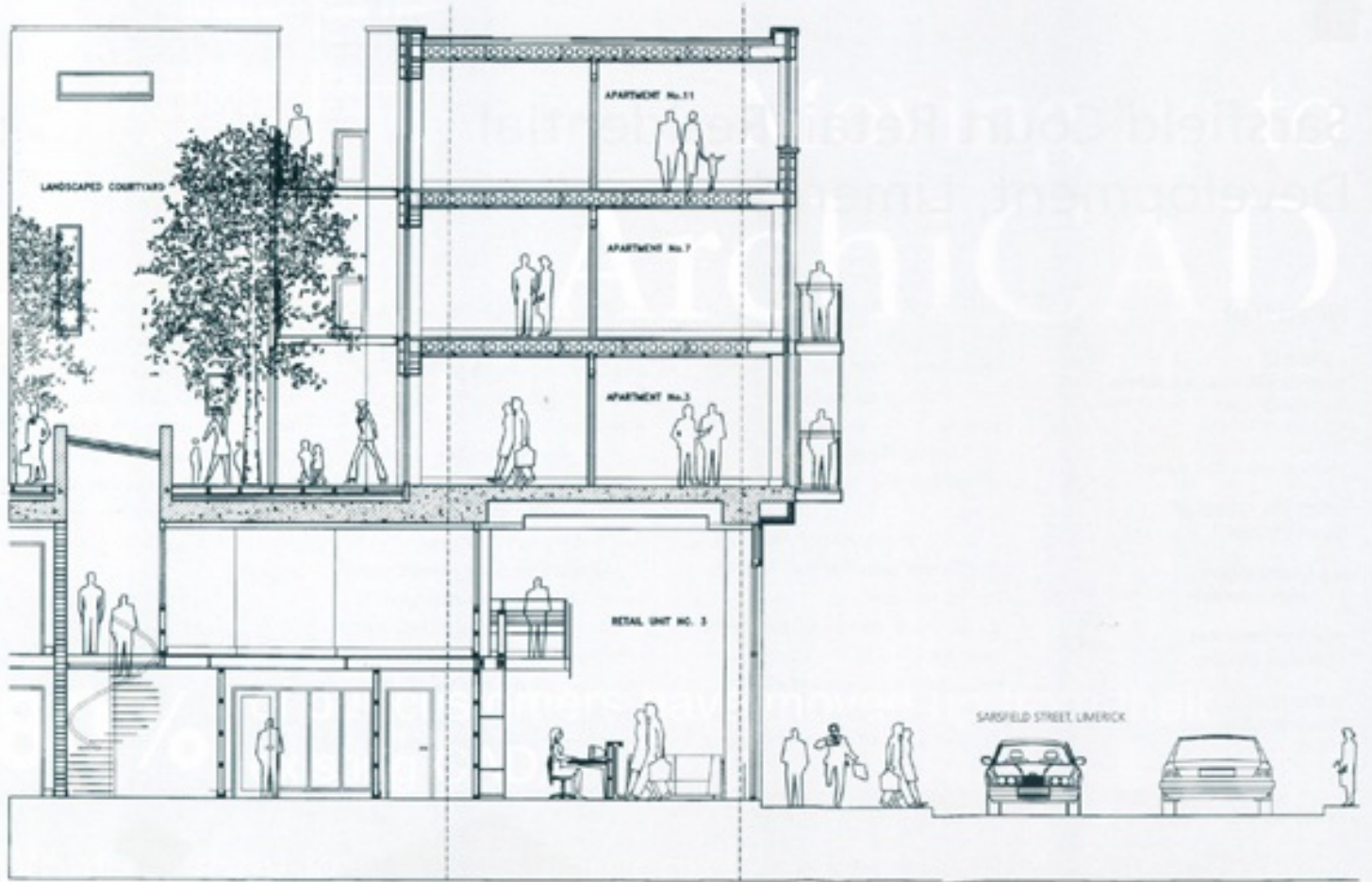
The streetscape is modulated with the projecting forms designed for the focal approach from Sarsfield Bridge into the city and orientated to maximize light and

views to the river.

The entrance towers and courtyard towers are expressed architecturally with strong colour within the open courtyard. Hard landscaping areas combined with timber seating provide a bright and protected environment away from the busy and noisy streets adjacent.

Elevation to Sarsfield Street



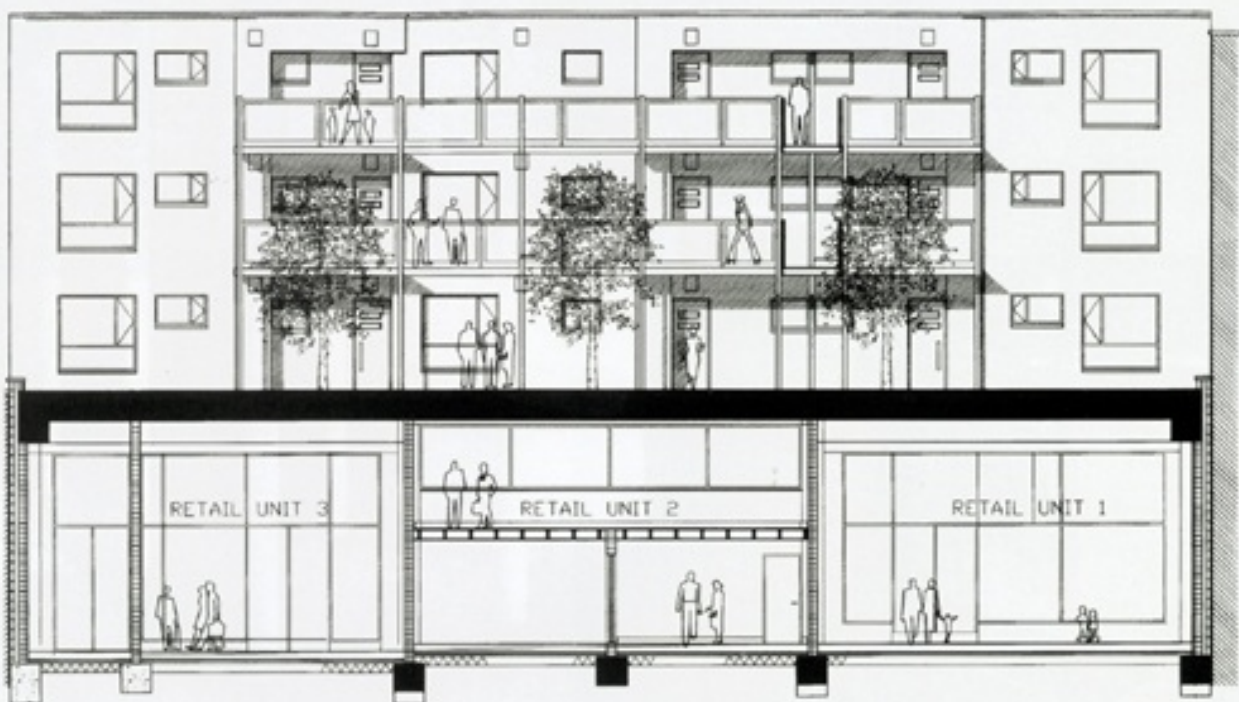


Cross section through courtyard, residential and retail

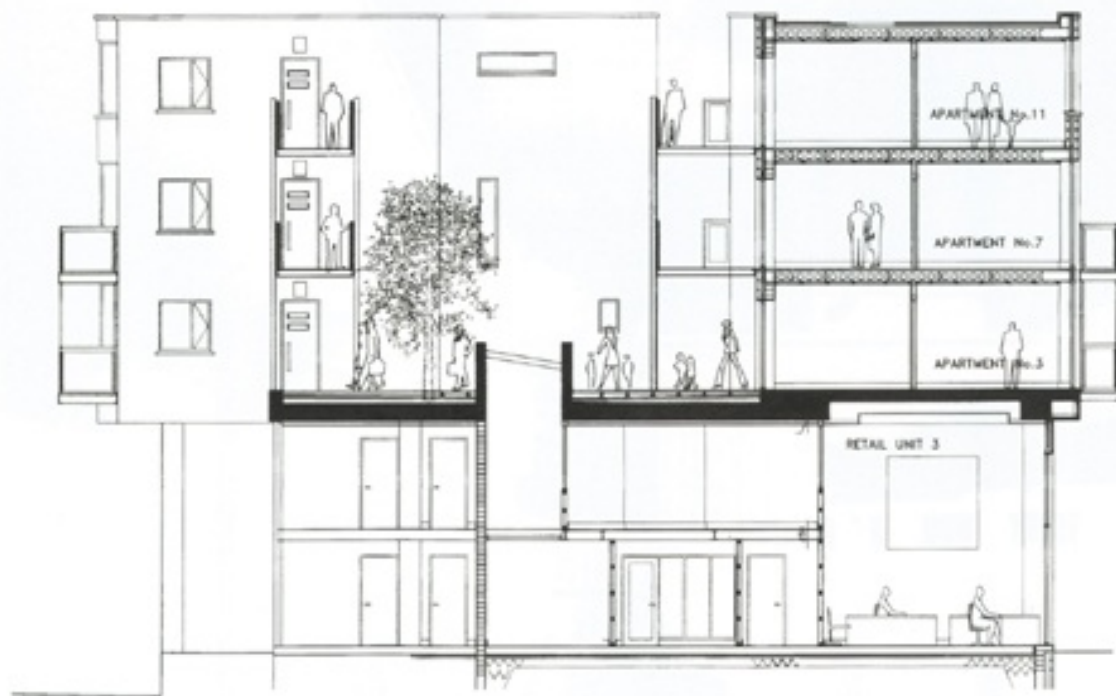


View to courtyard to entrance tower

View to walkway



Elevation section of walkways



Cross section



Typical dining space



View to lower walkway

NMA

Newenham Mulligan & Associates
Architects | Project Managers | Interior Designers

Articles

Extract from:
Irish Architect - January 2002

